

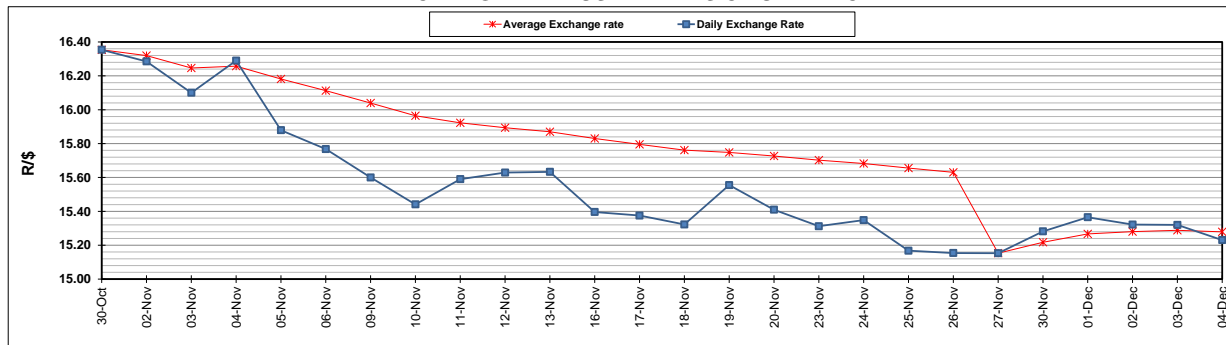
	PETROL 95 ULP	PETROL 93 ULP & LRP	DIESEL 0.05%	DIESEL 0.005%	ILL. PAR.
GAUTENG PUMP PRICE (SA c/l) AS FROM 02/12/2020	1,446.000	1,426.000	-	-	-
WHOLESALE PRICE (SA c/l) AS FROM 02/12/2020	-	-	1,245.420	1,247.820	684.688
SINGLE NATIONAL MAXIMUM RETAIL PRICE	-	-	-	-	856.000
BASIC FUEL PRICE - 04/12/2020 (SA c/l)	519.915	512.731	540.121	541.535	526.641
PRESS RELEASE CONTRIBUTION TO BFP 02/12/2020 - 04/12/2020 (SA c/l)	479.170	469.170	486.630	489.030	472.128
UNIT OVER/(UNDER) RECOVERY - 04/12/2020 (SA c/l)	(40.745)	(43.561)	(53.491)	(52.505)	(54.513)
AVERAGE BASIC FUEL PRICE 27/11/2020 - 04/12/2020	511.068	503.923	530.469	531.699	514.794
AVERAGE UNIT OVER/(UNDER) RECOVERY 27/11/2020 - 04/12/2020	(18.248)	(21.103)	(49.839)	(48.669)	(53.166)

### ANALYSIS MOVEMENT OF AVERAGE OVER/(UNDER) RECOVERY

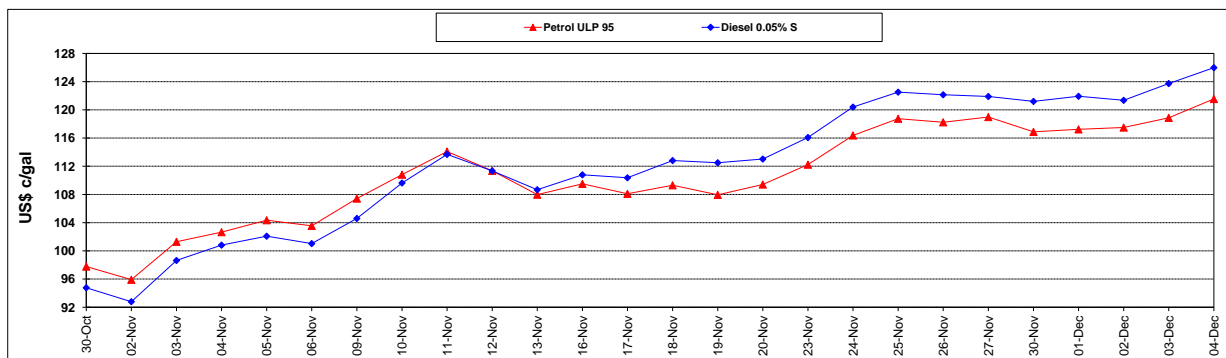
	PETROL 95	PETROL 93	DIESEL 0.05%	DIESEL 0.005%	ILL. PAR.
- MOVEMENT IN INTERNATIONAL PRODUCT PRICES	(30.012)	(32.703)	(62.050)	(60.908)	(65.016)
- MOVEMENT IN EXCHANGE RATE	11.764	11.600	12.211	12.239	11.850
AVERAGE UNIT OVER/(UNDER) RECOVERY 27/11/2020 - 04/12/2020	(18.248)	(21.103)	(49.839)	(48.669)	(53.166)

### R/\$ EXCHANGE RATE - (R/\$15.2305 - 04/12/2020)

#### EXCHANGE RATE USED IN BASIC FUEL PRICE



#### INTERNATIONAL PRODUCT PRICES OF BASKET USED IN BASIC FUEL PRICE



#### BASIC FUEL PRICE IN SA CENTS PER LITRE

